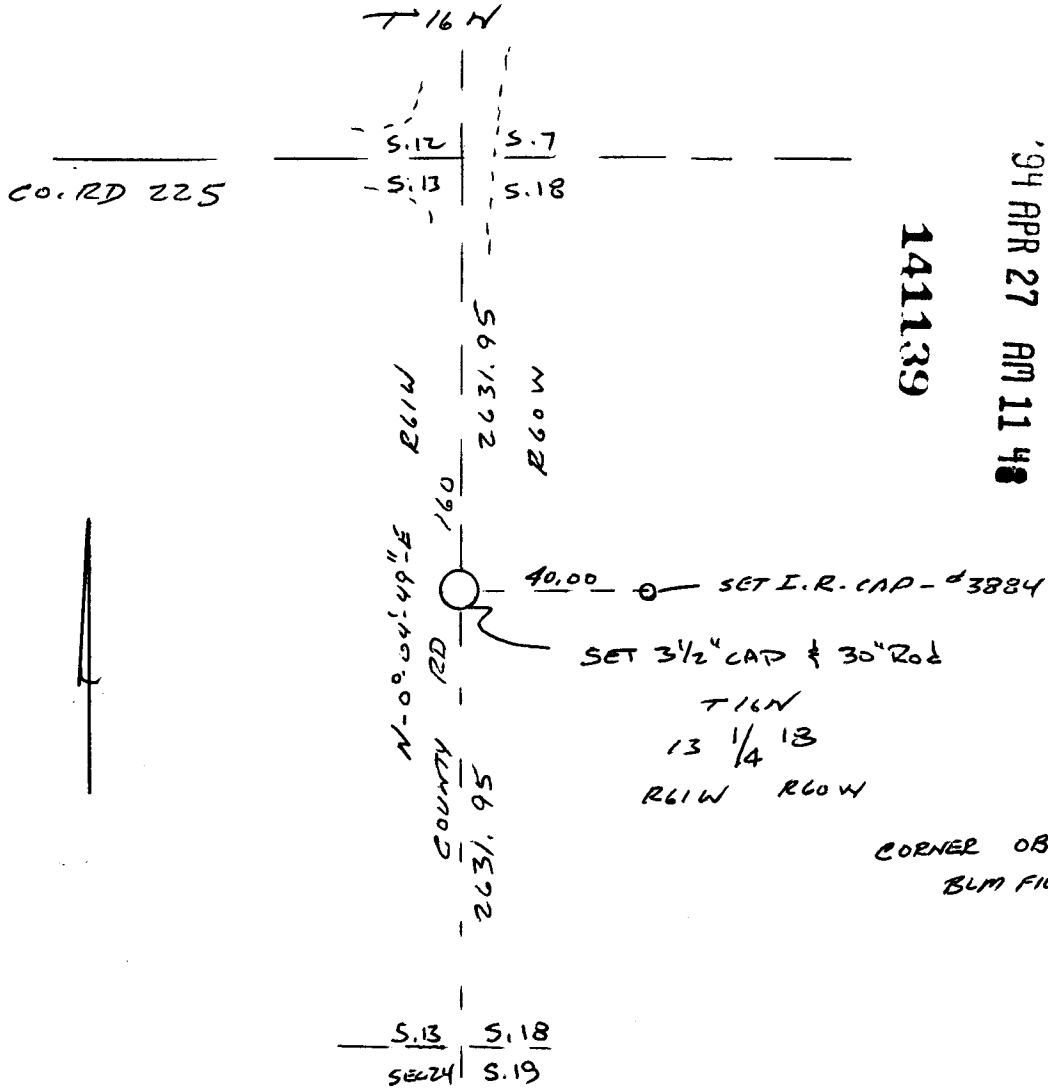


State of Wyoming Corner Record

(In compliance with the *CORNER PERPETUATION AND FILING ACT*, Wyoming Statutes, 1977, Section 36-11-101, et. seq., and the Rules and Regulations of the Board of Registration for Professional Engineers and Professional Land Surveyors)

Reverse side of this form may be used if more space is needed.

Record of original survey and citation of source of historical information (if corner is lost or obliterated). Description of corner monumentation evidence found and/or monument and accessories established to perpetuate the location of this corner. Sketch of relative location of monument, accessories, and reference points with course and distance to adjacent corner(s) (if determined in this survey). Method and rationale for reestablishment of lost or obliterated corner.



RECEIVED
LARAMIE COUNTY
CHEYENNE, WY.
141139
94 APR 27 AM 11 48

CORNER OBLITERATED
BLM FIELD NOTES

Date of Field Work: 3/11/94 Office Reference: TIP

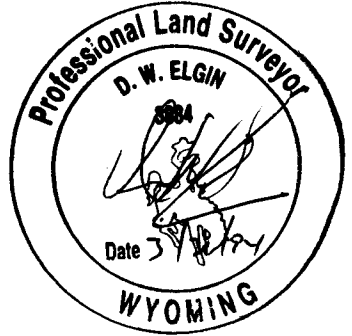
CROSS INDEX DIAGRAM

	1	2	3	4	5	6	7	8	9	10	11	12	13	14	15	16	17	18	19	20	21	22	23	24	25
A																									
B																									
C	6																								
D		5																							
E			4																						
F				3																					
G					2																				
H						1																			
I																									
J																									
K																									
L																									
M																									
N																									
O																									
P																									
Q																									
R																									
S																									
T																									
U																									
V																									
W																									
X																									
Y																									
Z																									
	2	3	4	5	6	7	8	9	10	11	12	13	14	15	16	17	18	19	20	21	22	23	24	25	

Firm/Agency, Address
Douglas W. ELGIN
1109 MILT-RUSE
BURKE, WY 82053

Telephone Number: 307-547-3319

This corner record was prepared by me or under my direction and supervision.
SEAL & SIGNATURE



Corner Name: W 1/4 18 Section: 18 T 16 R 60; 6:44 P.M. Cross-Index No.: L-1

BOOK 1372

0262